

Stamixco
Precision Static Mixing Nozzles
Bell Mount Static Mixing Series

ST 160-818

ST 160-824

ST MC 10-18

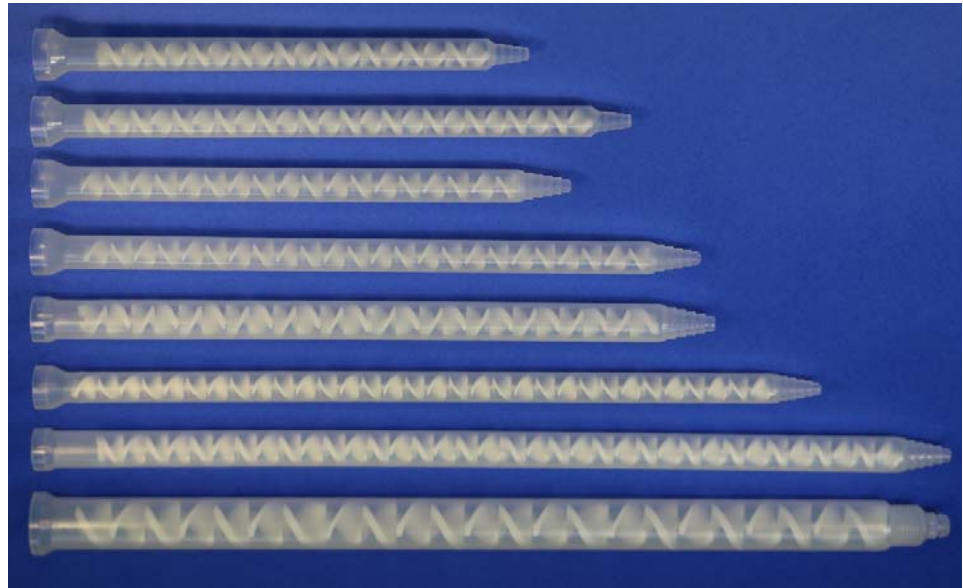
ST MC 10-24

ST 161-224

ST MC 10-32

ST 161-236

ST 162A-623



Product Number	Inner diameter I.D. (In/mm)	Number of mixing elements	Outer diameter O.D. (in/mm)	Total static mixer Length (in/mm)	Nozzle diameter (in/mm)	Nozzle outlet style	Cartridge size, typical (mL)	Mix ratio
ST 160-818	0.366/9.29	18	0.500/12.70	7.28/184.91	0.14/3.55	Step	200, 400, 600	1:1, 2:1
ST 160-824	0.366/9.29	24	0.500/12.70	9.12/231.65	0.12/3.05	Step	200, 400, 600	1:1, 2:1
ST MC 10-18	0.394/10.00	18	0.549/13.94	8.43/214.12	0.14/3.55	Step	200, 400, 600	1:1, 2:1
ST MC 10-24	0.394/10.00	24	0.549/13.94	10.87/276.10	0.12/3.05	Step	200, 400, 600	1:1, 2:1
ST 161-224	0.500/13.00	24	0.658/16.71	11.54/292.58	0.157/4.0	Step	200, 400, 600	1:1, 2:1
ST MC 10-32	0.394/10.00	32	0.532/13.51	10.80/352	0.12/3.05	Step	200, 400, 600	1:1, 2:1
ST 161-236	0.500/13.00	36	0.658/16.71	16.54/420	0.177/4.50	Step	200, 400, 600	1:1, 2:1
ST 162A-623	0.787/20.00	23	0.970/24.6	17.13/435	0.256/6.5	Threaded	Meter Mix	1:1, 2:1

Casing Material: Polypropylene
Element Material: Polyacetal

Lowest Prices Guaranteed

STmix™ ¼" Static Mixing Series

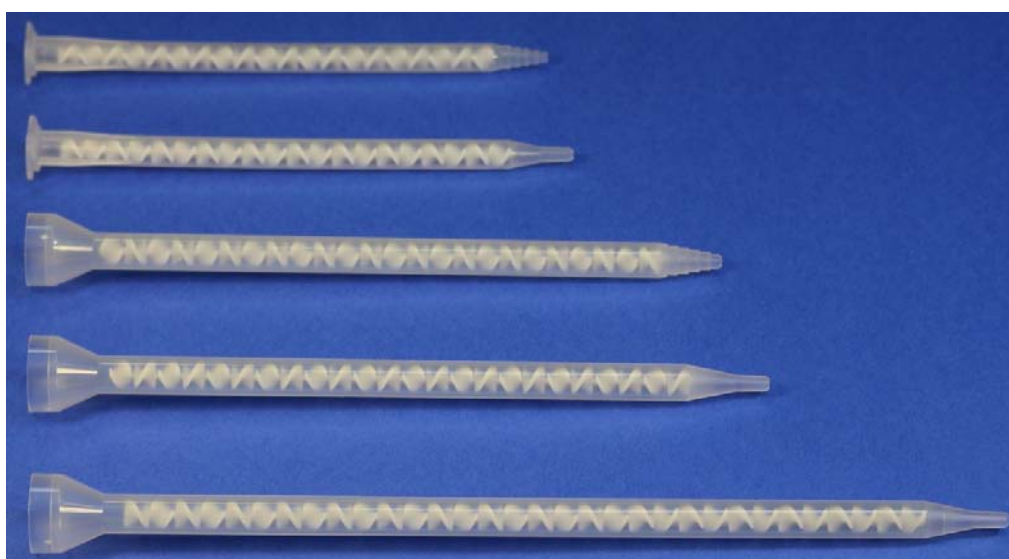
ST MA 6.3-20-S

ST 190-620

ST MC 06-24

ST 160-624

ST 160-632



Product Number	Inner diameter I.D. (In/mm)	Number of mixing elements	Outer diameter O.D. (in/mm)	Length (in/mm)	Nozzle diameter (in/mm)	Nozzle outlet style	Cartridge size, typical (mL)	Mix ratio
ST MA 6.3-20-S	0.250/6.35	20	0.335/8.51	5.85/148.59	0.06/1.52	Step	50	1:1, 2:1
ST 190-620	0.250/6.35	20	0.335/8.51	5.92/150.32	0.07/1.78	Slip Luer	50	1:1, 2:1
ST MC 06-24	0.251/6.38	24	0.383/9.73	7.29/185.17	0.08/1.93	Step	200, 400, 600	1:1, 2:1
ST 160-624	0.251/6.38	24	0.383/9.73	7.29/185.17	0.08/1.93	Slip Luer	200, 400, 600	1:1, 2:1
ST 160-632	0.250/6.35	32	0.383/9.73	9.49/241	0.08/1.93	Slip Luer	200, 400, 600	1:1, 2:1

Casing Material: Polypropylene
Element Material: Polyacetal

Lowest Prices Guaranteed

STmix™ Luer Lock Static Mixing Series

ST MA 6.3-20-LL

ST MC 06-24-LL

ST 160-632LL

ST 160-824LL



Product Number	Inner diameter I.D. (in/mm)	Number of mixing elements	Outer diameter O.D. (in/mm)	Length (in/mm)	Nozzle outlet style	Cartridge size, typical (mL)	Mix ratio
ST MA 6.3-20-LL	0.250/6.35	20	0.335/8.51	6.21/157.73	Luer Lock	50	1:1, 2:1
ST MC 06-24-LL	0.251/6.38	24	0.383/9.73	7.46/189.48	Luer Lock	200, 400, 600	1:1, 2:1
ST 160-632 LL	0.250/6.35	32	0.383/9.73	9.49/241	Luer Lock	200, 400, 600	1:1, 2:1
ST 160-824LL	0.366/9.29	24	0.500/12.70	9.12/231.65	Luer Lock	200, 400, 600	1:1, 2:1

Element Material: Polyacetal
Casting Material: Polypropylene

Lowest Prices Guaranteed